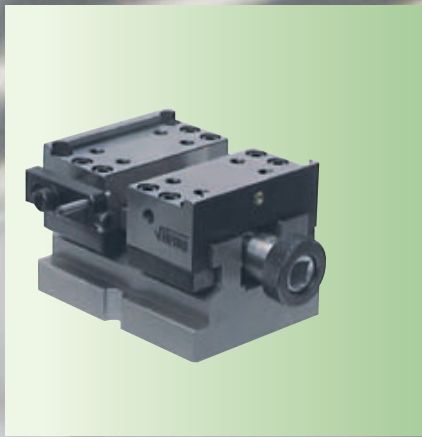
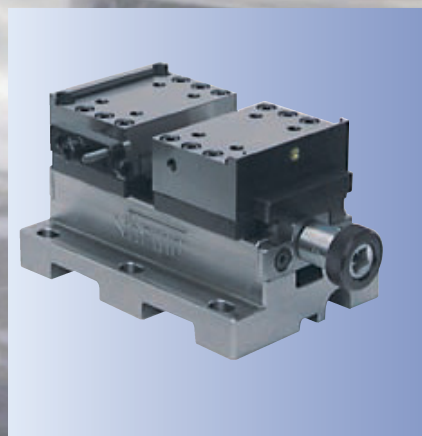


Nothing stands in your way!



■ **hemo basic**

Centering vise ZS75 100/150/200



■ **hemo precisa**

Centering vise ZS75 100/150/200



■ **hemo hi-tec**

Centering vise ZS100

SWISS
hemo
✓ WERKZEUGBAU

hemo basic

Centering vise ZS75 /100/150/200

The **hemo basic** centering vise is the favorably priced clamping unit perfectly suitable for first clamping requirements.

Fixed at lightning speed

Workpiece support surface can simply be clipped in and will not be shifted by the movements of the 5-axis machine.

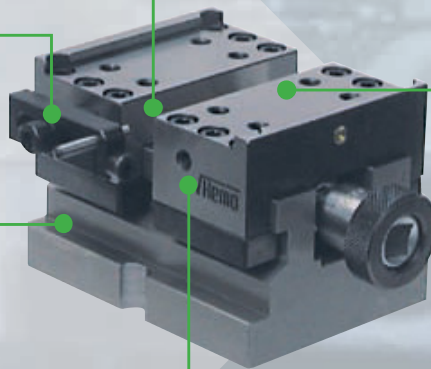


Freely accessible

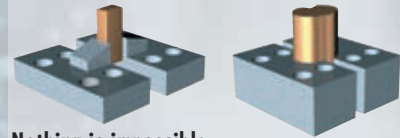
With the detachable magnet, it is possible for the face to be machined laterally without any impediment.

Always in good shape

The stable design will guarantee the highest degree of stability – without any deformation of the base plate – even under heavy-duty machining conditions.



Material:	Black nitride steel
Outside dimensions:	
Type 75/100:	76 x 100 x 86 mm
Type 75/150:	76 x 150 x 86 mm
Type 75/200:	76 x 200 x 86 mm
Suitable for:	First clamping



Nothing is impossible

Form jaws, narrow jaws or jaws with free rear ends – simply everything can be clamped reliably.

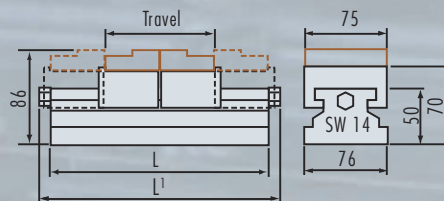


In the twinkling of an eye

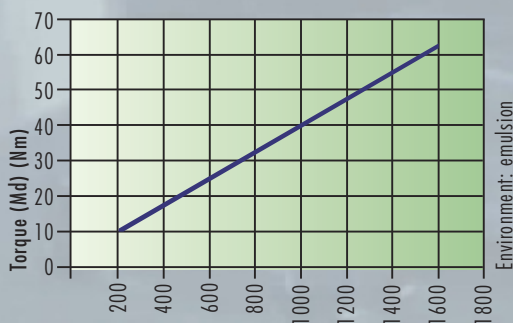
Clamping of all things great and small – just turn or exchange the jaws.

The compact dimensions

ZS 75	L mm	L ¹ mm	Travel mm	Max. clamping range mm
100	100	117	27.5	27/95
150	150	170	51	50/148
200	200	224	101	100/198

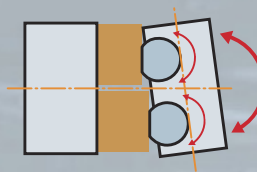


Clamping power



Clamping power F (daN)

The clamping power is the arithmetical sum total of the jaw forces



When things just don't go your way

Whether cast parts, blank or sawn parts – the flexible swinging jaws with the rotatable thrust pads will fit any unevenness and transmit the pressure optimally into the workpiece – always from the center so that a tight cut will be possible.

Application with Art. No. 101051/101056

Exchangeable jaws for the hemo basic centering vise

Soft jaw low Art.-No. 101041
20 x 34.2 x 75 mm

Soft jaw high Art.-No. 101042
30 x 34.2 x 75 mm

Hard jaw flat corrugation Art.-No. 101043
20 x 34.2 x 75 mm

Hard jaw pointed corrugation Art.-No. 101044
20 x 34.2 x 75 mm

Clamping jaw ground with step Art.-No. 101059
20 x 34.2 x 75 mm

Grip jaw Art.-No. 101096
20 x 34.2 x 75 mm

Swinging jaw down Art.-No. 101079

Workpiece supports Art.-No. 101090
height according to customer requirements

Hard jaw flat corrugation rear smooth Art.-No. 101048
20 x 24.6 x 75 mm

Hard jaw pointed corrugation rear smooth Art.-No. 101049
20 x 24.6 x 75 mm

Soft jaw low Art.-No. 101045
20 x 24.6 x 75 mm

Soft jaw low Art.-No. 101046
20 x 49.2 x 75 mm

Soft jaw high Art.-No. 101047
30 x 49.2 x 75 mm

Hard jaw flat corrugation rear smooth Art.-No. 101057
20 x 44.5 x 75 mm

Grip jaw Art.-No. 101097
20 x 49.2 x 75 mm

Clamping jaw ground with step Art.-No. 101062
20 x 49.2 x 75 mm

Corrugated jaw flat corrugation Art.-No. 100563
36 x 10 x 75 mm

Double swinging jaw top with flat corrugation thrust pads Art.-No. 101103
20 x 44.5 x 75 mm

Swinging jaw down Art.-No. 101056

Thrust pad pointed corrugation Art.-No. 101055

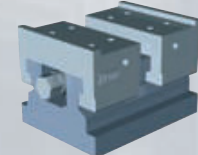
Thrust pad flat corrugation Art.-No. 101054

Thrust pad flat Art.-No. 101053

Lateral stop bolted on Art.-No. 100884

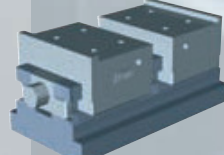
Lateral stop magnetic Art.-No. 100197

ZS75/100



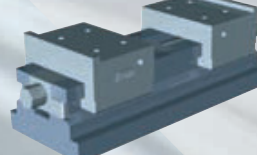
ZS 75 /100 Art.-No. 101091
without adapter boreholes
with adapter boreholes 101111

ZS75/150



ZS 75 /150 Art.-No. 101092
without adapter boreholes
with adapter boreholes 101112

ZS75/200



ZS 75 /200 Art.-No. 101093
without adapter boreholes
with adapter boreholes 101113

Blank plate Art.-No. 101082
Manual rapid change system 12kN, to be machined by customers

3-jaw chuck Art.-No. 101083
Manual rapid change system 12kN



Centering vice directly bolted on to datum point tooling system

Rapid clamping block Art.-No. 101077
Manual rapid change system 12kN on hemo multiple clamping system

Rapid clamping block Art.-No. 101069
Manual rapid change system 12kN on machine table

hemo precisa

Centering vise ZS75 /100/150/200

The **hemo precisa** centering vise is perfectly suitable for the versatile CNC machining processes. It is extremely compact, yet still has a highly stable design. Optimal accessibility, a wide range of exchangeable jaws, and the excellent repeatability of <math><0.01\text{ mm}</math> make it an indispensable aid in precision mechanics. In combination with a datum point system, automatic production can also be realized.

Freely accessible

With the detachable magnet, it is possible for the face to be machined laterally without any impediment.

Always in good shape

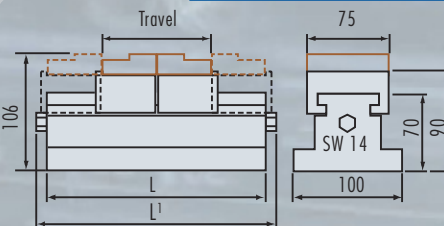
The stable design will guarantee the highest degree of stability – without any deformation of the base plate – even under heavy-duty machining conditions.

Always in the center

The center adjustment makes for quick centering on the machine or on a pallet.

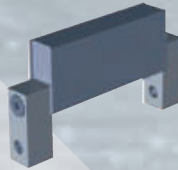
The compact dimensions

ZS 75	L mm	L ¹ mm	Travel mm	Max. clamping range mm
100	100	117	27.5	27/95
150	150	170	51	50/148
200	200	224	101	100/198



Fixed at lightning speed

Workpiece support surface can simply be clipped in and will not be shifted by the movements of the 5-axis machine.



Material:

Functional parts:
Hardened and ground steel

Repeatability:

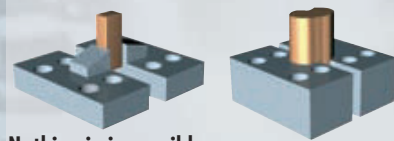
<math><0.01\text{ mm}</math>

Outside dimensions:

Type 75/100: 100 x 100 x 106 mm
Type 75/150: 100 x 150 x 106 mm
Type 75/200: 100 x 200 x 106 mm

Suitable for

First and second clamping



Nothing is impossible

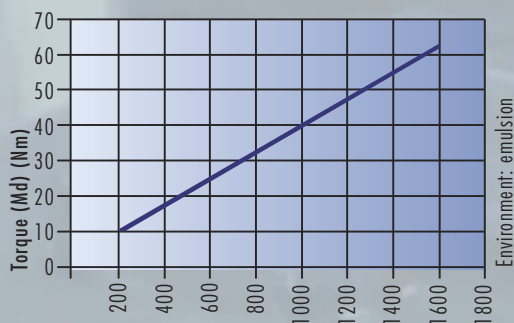
Form jaws, narrow jaws or jaws with free rear ends – simply everything can be clamped reliably.



In the twinkling of an eye

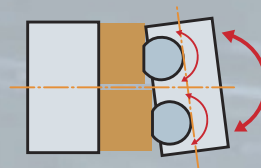
Clamping of all things great and small – just turn or exchange the jaws.

Clamping power



Clamping power F (daN)

The clamping power is the arithmetical sum total of the jaw forces



When things just don't go your way

Whether cast parts, blank or sawn parts – the flexible swinging jaws with the rotatable thrust pads will fit any unevenness and transmit the pressure optimally into the workpiece – always from the center so that a tight cut will be possible.

Application with Art. No. 101051/101056

Exchangeable jaws for the hemo precisa centering vise

Soft jaw low Art.-No. 101041
20 x 34.2 x 75 mm

Soft jaw high Art.-No. 101042
30 x 34.2 x 75 mm

Hard jaw flat corrugation Art.-No. 101043
20 x 34.2 x 75 mm

Hard jaw pointed corrugation Art.-No. 101044
20 x 34.2 x 75 mm

Clamping jaw ground with step Art.-No. 101059
20 x 34.2 x 75 mm

Grip jaw Art.-No. 101096
20 x 34.2 x 75 mm

Swinging jaw down Art.-No. 101079

Workpiece supports Art.-No. 101090
height according to customer requirements

Hard jaw flat corrugation rear smooth Art.-No. 101048
20 x 24.6 x 75 mm

Hard jaw pointed corrugation rear smooth Art.-No. 101049
20 x 24.6 x 75 mm

Soft jaw low Art.-No. 101045
20 x 24.6 x 75 mm

Soft jaw low Art.-No. 101046
20 x 49.2 x 75 mm

Soft jaw high Art.-No. 101047
30 x 49.2 x 75 mm

Hard jaw flat corrugation rear smooth Art.-No. 101057
20 x 44.5 x 75 mm

Grip jaw Art.-No. 101097
20 x 49.2 x 75 mm

Clamping jaw ground with step Art.-No. 101062
20 x 49.2 x 75 mm

Corrugated jaw flat corrugation Art.-No. 100563
36 x 10 x 75 mm

Double swinging jaw top with flat corrugation thrust pads Art.-No. 101103
20 x 44.5 x 75 mm

Swinging jaw down Art.-No. 101056

Thrust pad pointed corrugation Art.-No. 101055

Thrust pad flat corrugation Art.-No. 101054

Thrust pad flat Art.-No. 101053

Lateral stop bolted on Art.-No. 100884

Lateral stop magnetic Art.-No. 100197

Centering vice directly bolted on to **datum point tooling system**

ZS75/100

ZS 75 /100 Art.-No. 101058

Clamping plate with center adjustment Art.-No. 101062

ZS75/150

ZS 75 /150 Art.-No. 101061

Clamping plate with center adjustment Art.-No. 101063

ZS75/200

ZS 75 /200 Art.-No. 101064

Clamping plate with center adjustment Art.-No. 101065

Blank plate Manual rapid change system 12kN, to be machined by customers Art.-No. 101082

3-jaw chuck Manual rapid change system 12kN Art.-No. 101083

Rapid clamping block Manual rapid change system 12kN on hemo multiple clamping system Art.-No. 101077

Rapid clamping block Manual rapid change system 12kN on machine table Art.-No. 101069

90°

90°

hemo hi-tec

Centering vise ZS100

The **hemo hi-tec** centering vise is the result of thorough studies of the requirements of CNC 5-axis machining. Its outstanding feature is its power transmission. It guarantees an even clamping power throughout the clamping range. Many well-thought-out details make the **hemo hi-tec** centering vise **the top hit** in clamping technology.

Fixed at lightning speed

Workpiece support surface can simply be clipped in and will not even be shifted by movements of the 5-axis machine.



Material: Functional parts: hardened and ground steel

Repeatability: <0.01 mm

Outside dimensions:
Type 100: 128 x 280 x 155 mm

Suitable for: First and second clamping

Freely accessible

With the detachable magnet, it is possible for the face to be machined laterally without any impediment.

Always in good shape

The stable design will guarantee the highest degree of stability – without any deformation of the base plate – even with the highest clamping powers and heavy roughing.

Nothing is impossible

Form jaws, narrow jaws or jaws with free rear ends – simply everything can be clamped reliably.

Always in the center

The centering vise can be centered on the machine with just a few hand movements.

Pluggable on position boreholes, hole grid 40 and hole grid 50

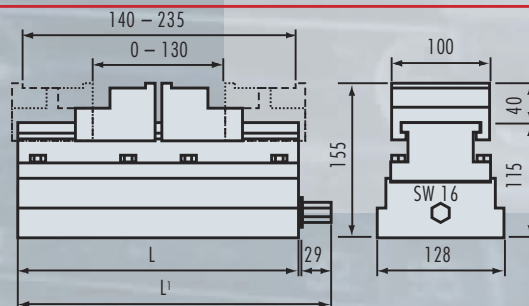


In the twinkling of an eye

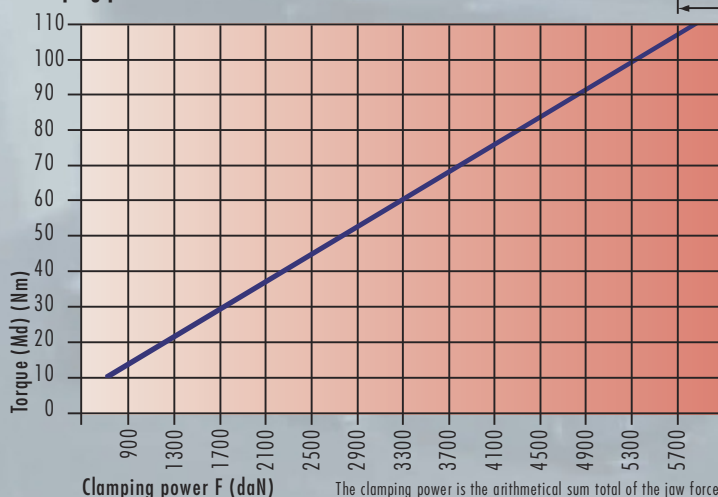
Clamping of all things great and small – just turn or exchange the jaws, without the use of any bolts.

The compact dimensions

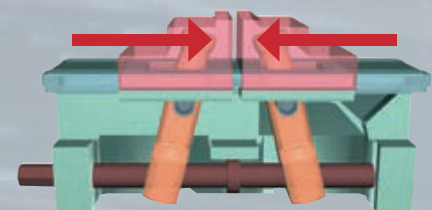
ZS 100	L mm	L ¹ mm	Travel mm	Max. clamping range mm
	280	312	156	140/235



Clamping power



Environment: emulsion



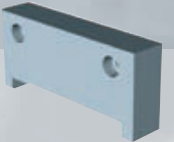
The power house

Due to the **hemo** power transmission, every workpiece can be clamped solidly with a correct power impact along the entire clamping length. This results in a higher degree of rigidity and improved chip-cutting data at a steady movement of the spindle. The repeatability of <0.01mm is also unequalled.

Exchangeable jaws for the hemo hi-tec centering vise



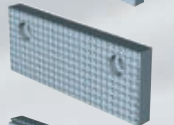
Prism jaw Art.-No. 100218
30 x 44x 100 mm



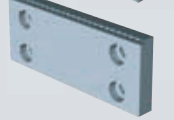
Soft steel jaw Art.-No. 100234
20 x 48x 100 mm



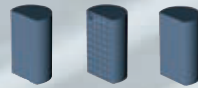
Pointed jaw with step Art.-No. 100214
8 x 40x 100 mm



Corrugated jaw Art.-No. 100282
flat corrugation
10 x 40x 100 mm



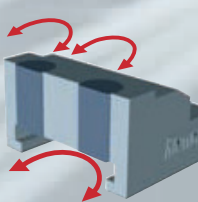
Grip jaw Art.-No. 101099
10 x 40 x 100mm



Thrust pad Art.-No. 100923
pointed corrugation

Thrust pad Art.-No. 100938
flat corrugation

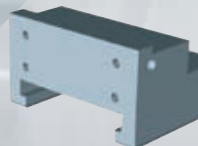
Thrust pad Art.-No. 100941
flat



Double swinging jaw Art.-No. 101081
50 x 80x 100 mm



Swinging jaw Art.-No. 101080
50 x 80x 100 mm



Clamping jaw Art.-No. 101094
ground with steps
50 x 80x 100 mm



Clamping jaw Art.-No. 101098
standard
50 x 80x 100 mm

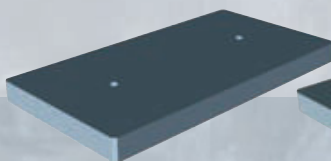
ZS100

Workpiece supports Art.-No. 101089
height according to
customer requirements

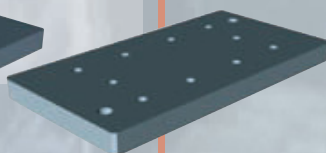
Lateral stop Art.-No. 100397
bolted on

Lateral stop Art.-No. 100198
magnetic

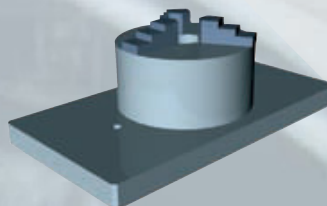
ZS 100 Art.-No. 101078
without clamping jaws



Blank plate Art.-No. 101085
Manual rapid change
system 40 kN,
to be machined by customers



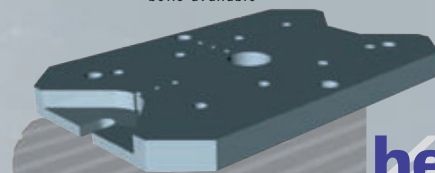
Clamping plate Art.-No. 101086
Manual rapid change
system 40 kN



3-jaw chuck Art.-No. 101087
Manual rapid change
system 40kN

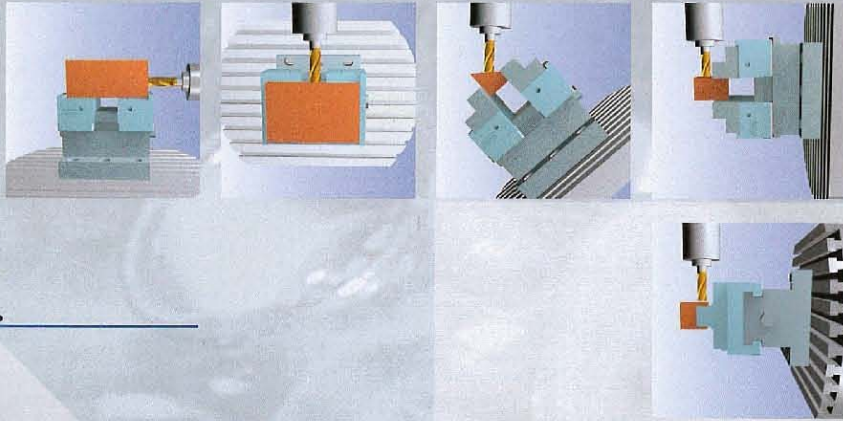
Base plate Art.-No. 101088
machine-specific centering
bolts available

Rapid change block Art.-No. 101084
Manual rapid change
system 40kN on machine table



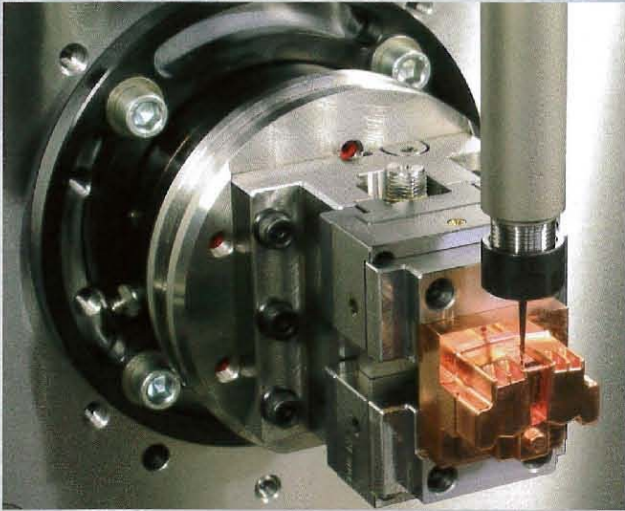
Freely accessible in every position.

The **hemo centering vise** removes all the obstacles in the way of a free operation of your 5-axis CNC machine – even when it comes to machining the face.



And this is how it looks in practice.

The high-precision and flexible **hemo centering vises** have been tried, tested and put into practice worldwide.



The future is built in.

The modular design of the **hemo centering vises** will guarantee flexible extension into future applications.

Incidentally, we find special versions quite as thrilling.

Representation:



Kräketorpsgatan 10, S-431 53 Mölndal
Tel: +46 (0) 31-870050 www.skarpverktyg.se
Fax: +46 (0) 31-871415 info@skarpverktyg.se

For more specific details about our Centering Vises and Multiple Clamping Systems, please contact us:

Hemo Werkzeugbau Tel. +41 (0)41 348 04 04
Dattenmattstrasse 12 Fax +41 (0)41 348 04 00
CH-6010 Kriens info@hemo.ch
Switzerland www.hemo.ch

hemo
WERKZEUGBAU